

# MANITRANSIT ■ TMT 2520 SR

Rough terrain telescopic  
truck-mounted forklift

- Maximum capacity 2500 kg
- Unloading from one side  
of the deck



## TMT 2520 SR



### CAPACITY

Maximum capacity .....2500 kg



### LIFTING

Maximum lifting height .....3350 mm

Maximum front reach .....1380 mm

Side-shift.....150 mm



### ENGINE / TRANSMISSION

Type .....PERKINS (50 HP)

Hydrostatic transmission

Driving wheels .....3



### TYRES

Front tyres .....10X16,5 10PR

Rear tyre.....10X16,5 10PR



### DIMENSIONS

Width .....2357 mm

Height .....2212 mm

Overhang (in transport position) .....1400 mm

Weight (without equipment) .....2272 kg

### IN STANDARD

ROPS/FOPS Cab + load indicator

FNR joystick

Waterproof dashboard and electric connections

Stabilisers

Differential lock

Anticorrosion treatment by cataphoresis

### OPTIONS

Full mounting kit (+ load repartition calculation)

Rearview mirrors

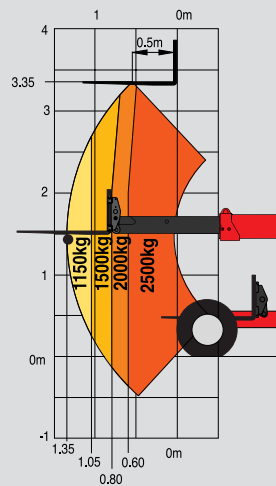
Rotating beacon

Road lights

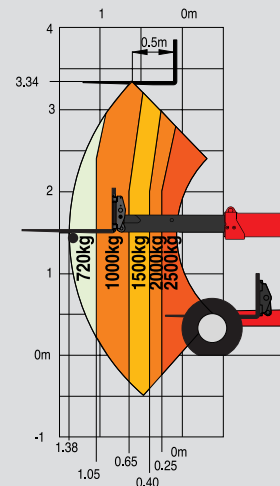
Working lights and reversing light

Load backrest

High torque



On tyres



On stabilisers

## LONG BOOM



Enables you to offload your lorry from one side : less space required to operate & more time saving.

## FNR JOYSTICK



This new « boom control » joystick now integrates the « reversing shift » function : the driver can keep one hand on the steering wheel and one hand on this joystick to operate any movement. Time saving and much better driving position.

## POWER



With a 50 HP Perkins engine connected to its 3 driving wheels, the TMT 2520 SR has more power to be at ease on any kind of ground.



This publication in no way constitutes an offer and the company reserves the right to alter specification without prior notice. The MANITOU models presented in this brochure can be supplied complete with optional equipment attachments. IMPORTANT : All regulations relating to vehicles apply to vehicles equipped with truck-mounted forklifts.

MANITOU BF SA

B.P. 249 - 44158 Ancenis Cedex - France

Tel. : 33 2 40 09 10 11 / Export Department Fax : 33 2 40 09 10 97

www.manitou.com

700305EN-B - 11/07 - Doc BE 310/Ind. A



# MANITOU